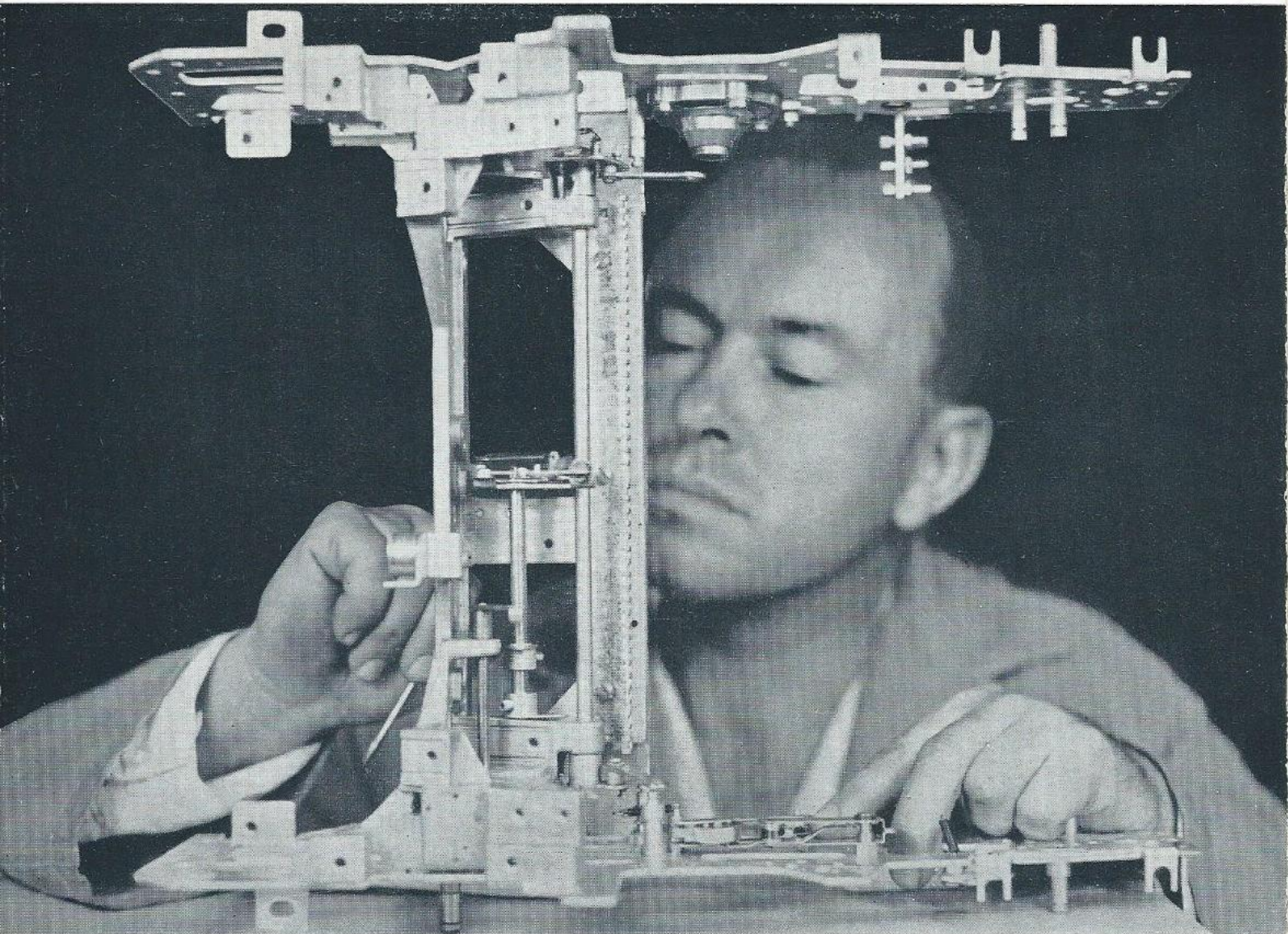


... precision manufacture



Each machine that leaves the IBM plant is precision built to give the accurate performance required by business and industry. The most modern machinery and methods, fine working conditions, and highly skilled workmen are employed to produce this quality in IBM equipment. Continued research and engineering development assures that IBM business equipment is of a calibre management deserves.

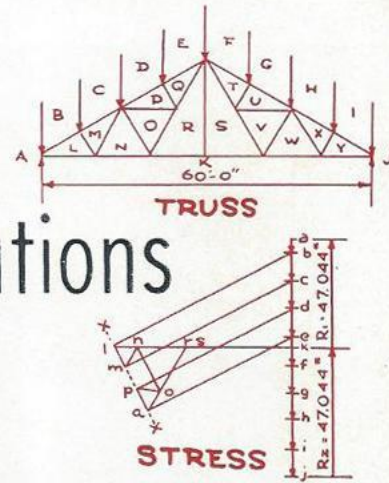
IBM AUSTRALIA PTY. LIMITED

IBM

In all Capital Cities and Principal Centres throughout Australia

DATA PROCESSING SYSTEMS

scientific and engineering computations

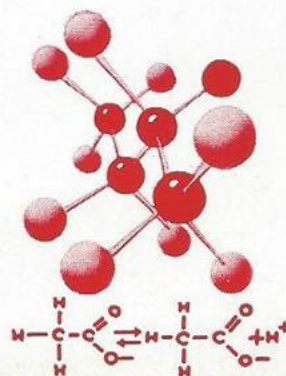


The 1620 Data Processing System is a powerful, small, stored-program computer, equally suited for scientific research, engineering and management science computations as well as business computation. Solid-state componentry and the most advanced computer circuits have been combined to achieve reliable, high-speed operation.

The 1620 is a complete data processing system which can perform arithmetic and all logical and input/output operations on a production basis. Conventional decimal arithmetic is used, providing ease of communication between man and machine.

Consisting of modular units, the Central Processing Unit, the Paper Tape Reader and Punch, and Card Read/Punch unit if desired, the 1620 requires no more space than the average-sized desk or drafting table. In this compact setting are incorporated many of the operating capabilities formerly found only in much larger computers.

Ideally suited to meet the needs of the many organisations which have complex technical computing requirements, the 1620 provides many of the advantages of larger computing systems at a much lower cost. The 1620 can also be used in support of larger IBM data processing systems.



IBM

Time Recording Equipment For large or small businesses



ATTENDANCE TIME RECORDERS

IBM Attendance Time Recorders provide accurate legibly-printed records of employee arrival and departure times conforming to Government regulations on wages and hours.

JOB COST RECORDERS

IBM Job Cost Recorders provide accurate job-time records by printing automatically the date, hour, and minute that jobs are started and finished. These figures give an accurate cost of labour which in turn provides the basis of an accurate charge for production.



IBM MASTER CLOCKS

The IBM Master Clock with Observatory Accuracy Controls Wall Clocks, Employee Time Records, Job Time Records, start and stop signals for an entire organisation and keeps them in perfect agreement.



TIME STAMPS

IBM Time Stamps print the year, month, day, hour and minute of receipt and despatch of letters, telegrams and documents. Responsibility for delays in handling correspondence can be placed accurately and quickly.

WATCHMAN'S TIME RECORDERS

IBM Watchman's Time Recorders give employers an accurate record of the movements of watchmen on their rounds. Ensures that watchmen are on the job, that the property is being protected, thus minimizing losses.

Accurate, lightweight and foolproof.



this

is
the
new
IBM
Electric



The low, sleek profile and sculptured lines tell you *this* is new. A new carriage, a keyboard adjustable to the individual touch, and 26 other important engineering advances tell you . . . *this* is the new IBM Electric typewriter. You will appreciate the crisp, distinguished look of letters typed on the new IBM: and you will be impressed with its high-speed, high-volumed output. In style, in performance, this is to-day's outstanding typewriter.

IBM

IBM PRODUCTS

Though IBM products differ in function, all are alike in one way, they save time for the business man. Delivery of any IBM Equipment marks the beginning — not the end — of customer relationship. Along with the equipment, IBM provides on a continuing basis — for its maintenance, instruction of operators and supervisory personnel, information on new applications—all things, in fact, that help the customer obtain maximum value from his investment.